

# Educational Pathways for Healthcare Careers in York Region

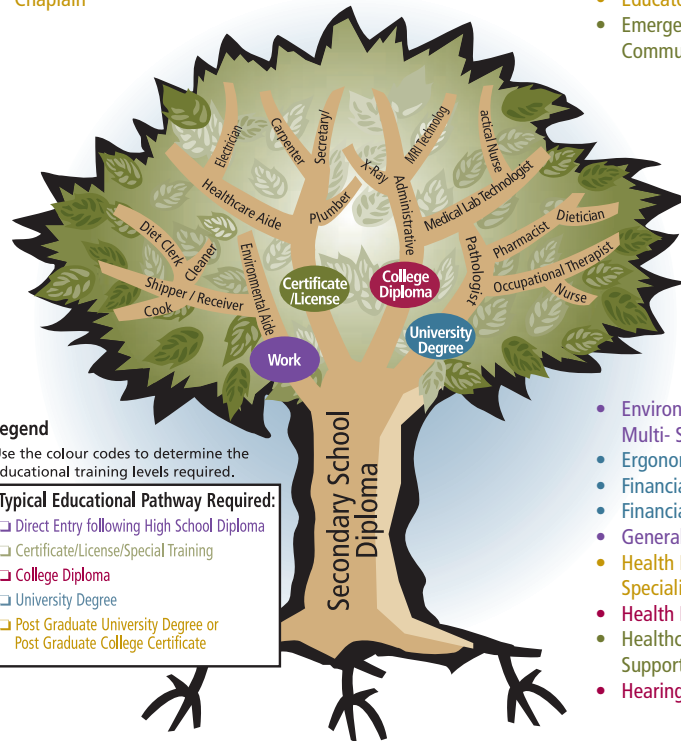
Please note that this chart reflects career titles used by healthcare settings in York Region. Individuals who research will find additional careers in healthcare and additional titles for careers.

Individuals are directed to internet sites such as **Career Matters** - [www.ilc.org](http://www.ilc.org)  
**Career Cruising** - [www.careercruising.com](http://www.careercruising.com)  
**Health Canada** - [www.hc-sc.gc.ca](http://www.hc-sc.gc.ca)  
**Canadian Institute for Health Information** - [www.cihi.ca](http://www.cihi.ca)

Originally published by the Hamilton Training and Advisory Board, this chart has been modified by the Workforce Planning Board of York Region and Bradford West Gwillimbury based on input from York Region health providers.



- Accountant
- Accounts Payable Clerk
- Accounts Receivable Clerk
- Activity Aide
- Acupuncturist
- Administrative Support
- Admitting Clerk
- Advanced Practice Nurse
- Athletic Therapist/ Personal Trainer
- Biomedical Technologist
- Business Analyst
- Cardiac Sonographer
- Cardiology Technologist
- Case Manager
- Central Processing Technician
- Chaplain
- Chief Financial Officer
- Chief Nursing Officer
- Chief Operating Officer
- Child and Youth Worker
- Child Life Specialist
- Chiropodist/Podiatrist
- Cleaner
- Clinical Audiologist
- Clinical Coordinator
- Clinical Manager
- Clinical Nurse Specialist
- Clinical Research Associate
- Communications Clerk
- Communicative Disorders Assistant
- Community Nurse
- Cook
- Cook's Helper
- CultiCall Taker/Bed Management
- Dental Assistant
- Dental Hygienist
- Developmental Services Worker
- Dialysis Specialist
- Diet Clerk
- Dietician
- Dietician Assistant
- Doctor of Traditional Chinese Medicine
- Early Childhood Resource Specialist
- Early Intervention Specialist
- Echocardiograph Technologist
- Educator
- Emergency Communications



**Legend**  
 Use the colour codes to determine the educational training levels required.

**Typical Educational Pathway Required:**

- Direct Entry following High School Diploma
- Certificate/License/Special Training
- College Diploma
- University Degree
- Post Graduate University Degree or Post Graduate College Certificate

- 1. Fundamental Skills:**
- communicate
  - manage information
  - use numbers
  - think and solve problems

- 2. Personal Management Skills:**
- demonstrate positive attitudes and behaviours
  - be responsible
  - be adaptable
  - learn continuously
  - work safely

- 3. Teamwork Skills:**
- work with others
  - participate in projects and tasks

- Help Desk Consultant
- Holistic Nutritionist
- Horticultural Therapist Registered (HTR)
- Horticultural Therapist Technician (HTT)
- Independent Living Specialist
- Infection Control Practitioner
- Information Technology/ Computer Technician
- Instructor for Blind and Visually Impaired
- Kinesioologist
- Librarian
- Low Vision Specialist
- Mailroom Aide
- Maintenance Mechanic II
- Maintenance Trades examples:
  - Carpenter
  - Electrician
  - Millwright
  - Painter
  - Plumber
- Manager
- Medical Laboratory Assistant
- Medical Laboratory Technologist
- Medical Resonance Imaging Technologist
- Medical Transcriptionist
- Mental Health Counsellor
- Midwife
- Nuclear Medicine Technologist
- Nurse Clinician
- Nurse Practitioner
- Occupational Health and Safety Nurse
- Occupational Therapist
- Occupational Therapist Assistant
- Occupational Therapy Assistant/Physiotherapy Assistant
- Operating Room Technician
- Optician
- Optometrist
- Organizational Development Consultant
- Orientation and Mobility Specialist
- Orthopedic Technologist
- Paramedic
- Pathologist
- Payroll Administrator
- Personal Support Worker
- Pharmacist
- Pharmacy Technician
- Physical Therapist Assistant
- Physician
- Physiotherapist
- Polysomnographic Technologist
- Porter
- President and Chief Executive Officer
- Psychologist
- Psychometrist
- Public Health Nurse
- Public Relations Specialist
- Purchasing Clerk
- Radiopharmacist
- Recreation Therapist
- Registered Massage Therapist
- Registered Nurse
- Rehabilitation Therapist
- Respiratory Care Practitioner (Respiratory Therapist)
- Safety Advisor
- Senior Financial/Decision Support Analyst
- Service Assistant
- Shipper/Receiver
- Sign Language Interpreter
- Social Service Worker-Gerontology
- Social Worker
- Speech Language Pathologist
- Storeperson
- Substance Abuse Prevention (Addiction) Worker
- Supply Coordinator
- Systems Specialist
- Technical Specialist
- Therapeutic Recreation Specialist
- Ultrasound (Medical Sonographer)
- Ultrasound Technologist
- Unit Secretary/Clerk
- Volunteer Coordinator
- X-Ray Technologist

**SAMPLE EDUCATIONAL PATHWAYS FOR ALL POST-SECONDARY DESTINATIONS ARE AVAILABLE.**